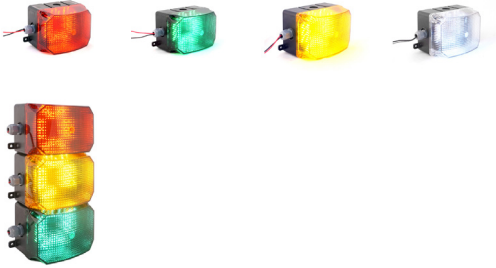
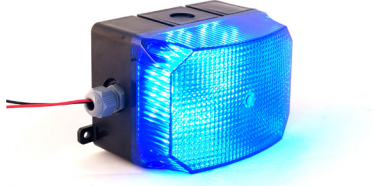
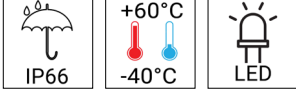
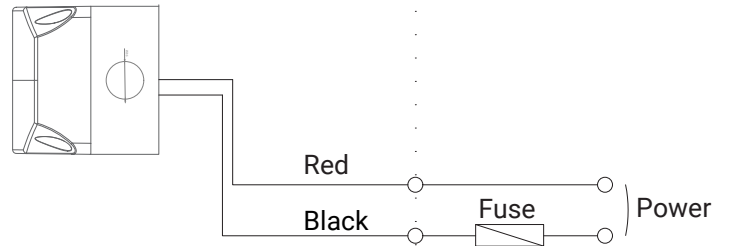
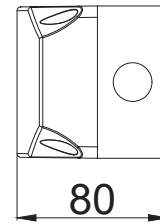
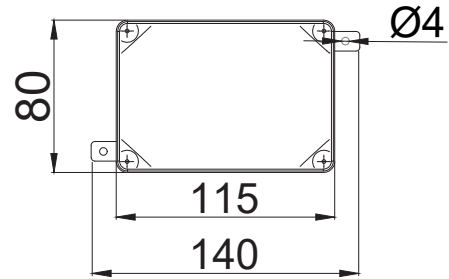


Visual Signalling Equipment
MS 250 Cube LED Multifunction Beacon

FEATURES

- IP66 excellent protection
- Multiple lights could be mounted to each other easily
- Suitable for industrial and general use
- LED reflector lens with multi-tiered design provides an even and clear illumination throughout the entire lens

DRAWINGS


- Product can be wired regardless of polarity

SPECIFICATION

Voltage range (V)	110-220VAC	12-24VAC/DC
Current range(MA)	40-20	375-187
Power range(W)	4.5	
LED Power(W)	4.8	
LED Bin Code	6000-6500K	
Light Intensity(MCD)	132000	
Working Mode	3 flashing 6 flashing 10 flashing double flash 20FPM 40FPM 60FPM 90FPM 150FPM Cross flashing steady on	
Materials	Lens PC, Body-ABS	
Protection Rate	IP66	

HOW TO ORDER

MS	250	.	1	.	110 - 220VAC
	[MODEL]		[COLOR]		[VOLTAGE]
			• 1- Red		110 - 220VAC
			• 2- Green		12 - 24VAC/DC
			• 3- Yellow		
			○ 4- White		
			• 5- Blue		